

---

---

## Creating a Client/Server ODBC Link For Pervasive.Sql 2000



4008 NE 123<sup>rd</sup> Avenue  
Vancouver, WA 98682-6456

Email: [support@etbsolutions.com](mailto:support@etbsolutions.com)

Web: [www.etbsolutions.com](http://www.etbsolutions.com)

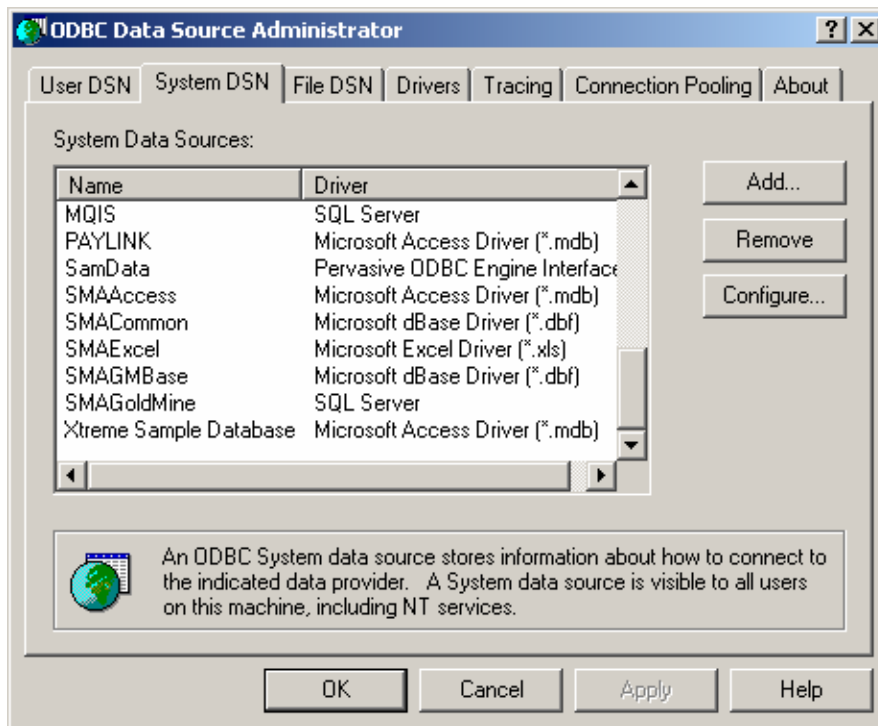
Phone: 360.521.9085

---

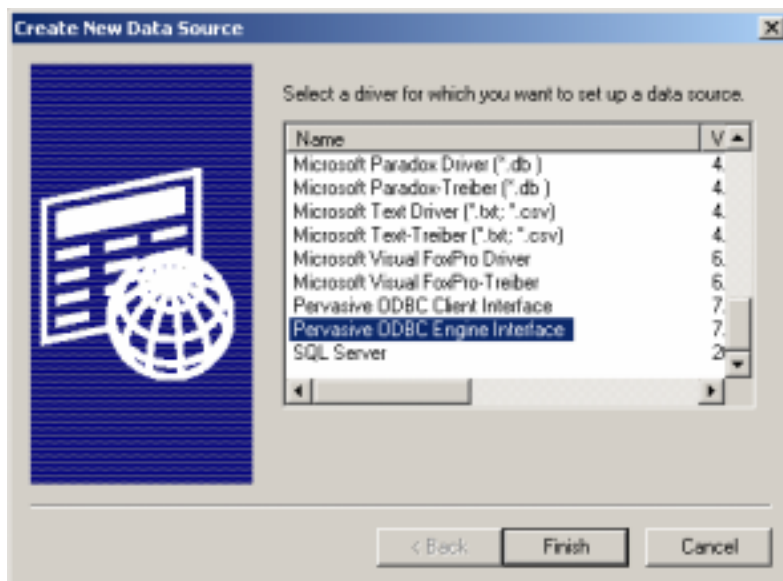
# Creating a Client/Server ODBC link for Pervasive.SQL

## Create the Server DSN first.

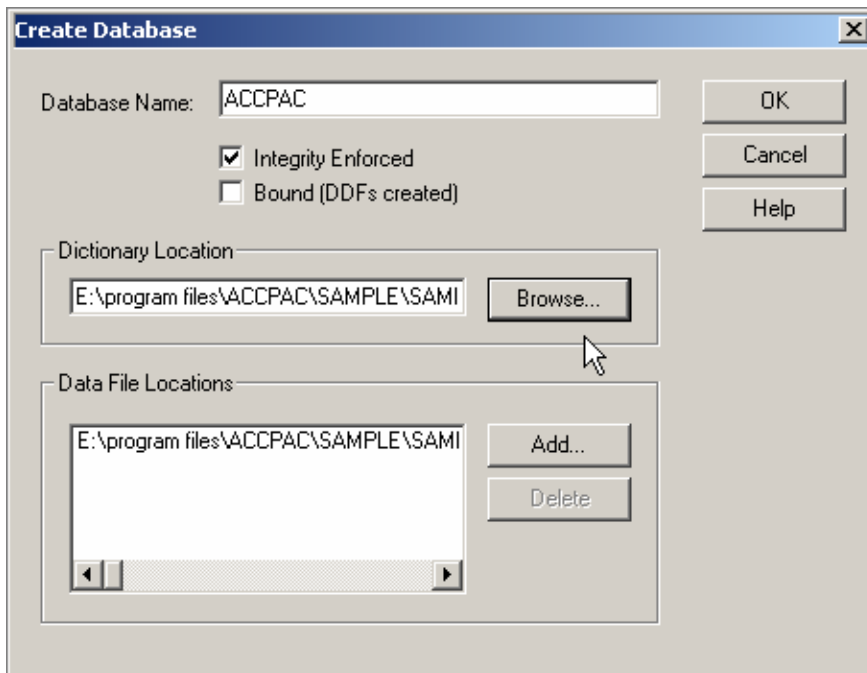
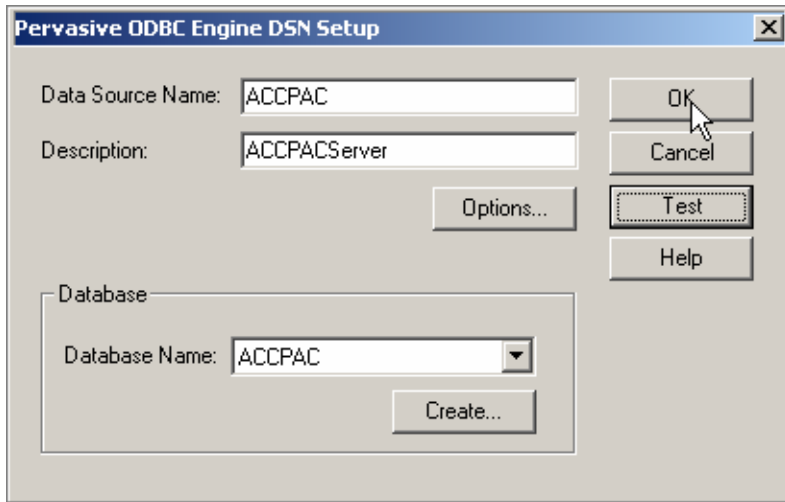
First get into the **ODBC Data Source Administrator** of the server machine that is running the Pervasive.SQL 2000 system. The method of getting into it depends on the server's Operating System (OS) and needs administrative privileges. When there, click on the **System DSN** tab and then on the **Add...** button.



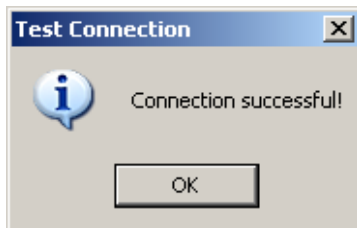
Select the driver for **Pervasive ODBC Engine Interface** and click on the **Finish** button.



On the next screen supply a **Data Source Name** that will be recognizable by any that need to use it. Also enter an appropriate **Description**. Click on **Create...** to add a new name for the DSN.

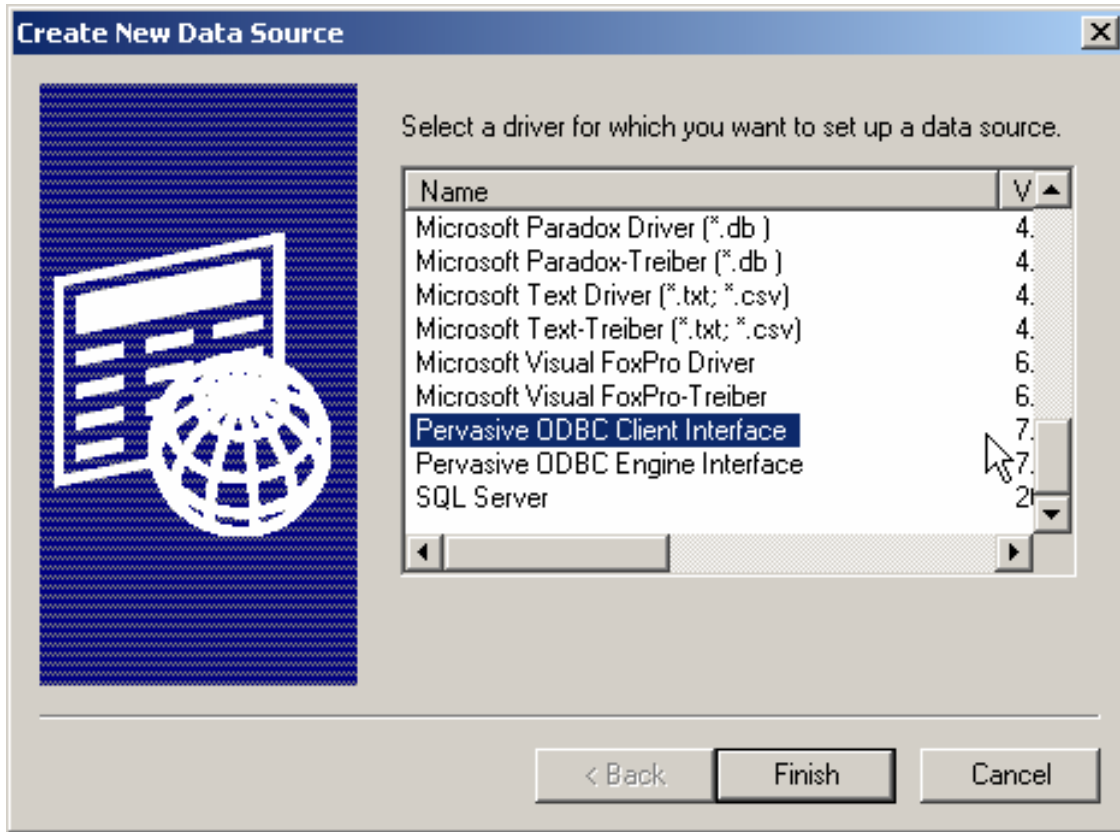


Fill in a **Database Name** and point to the **Dictionary Location** of the local server. Click **OK** to get previous screen and click on **TEST** to make sure you get:

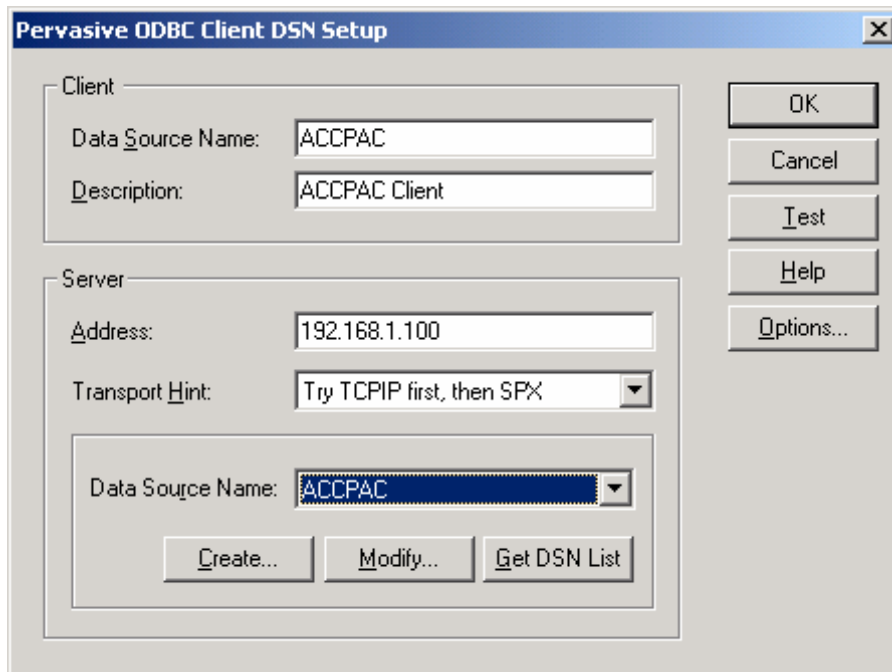


## Now create the client DSN.

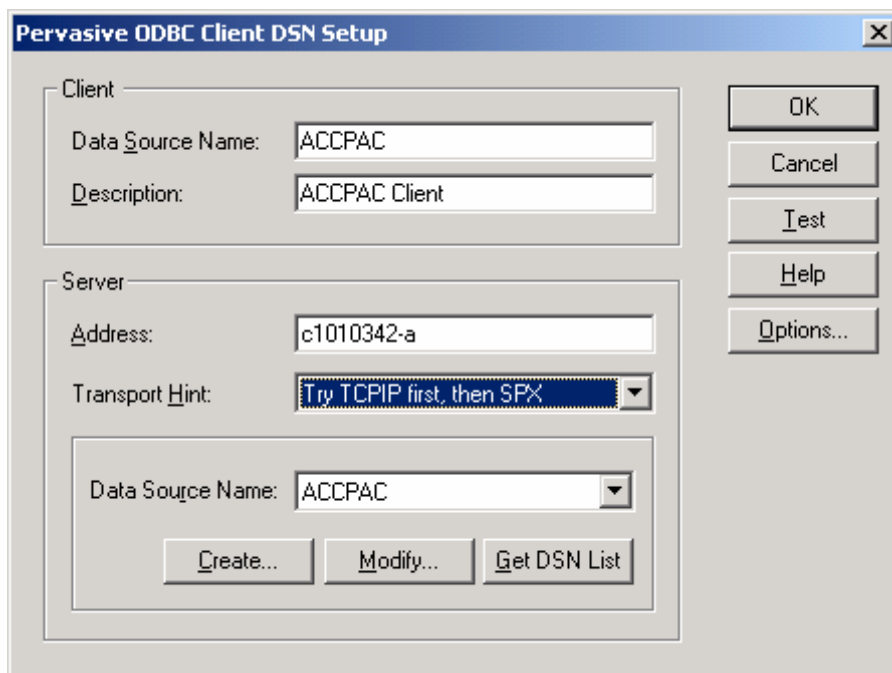
Then on the **Client Machine** create a System DSN using the **Pervasive ODBC Client** driver.



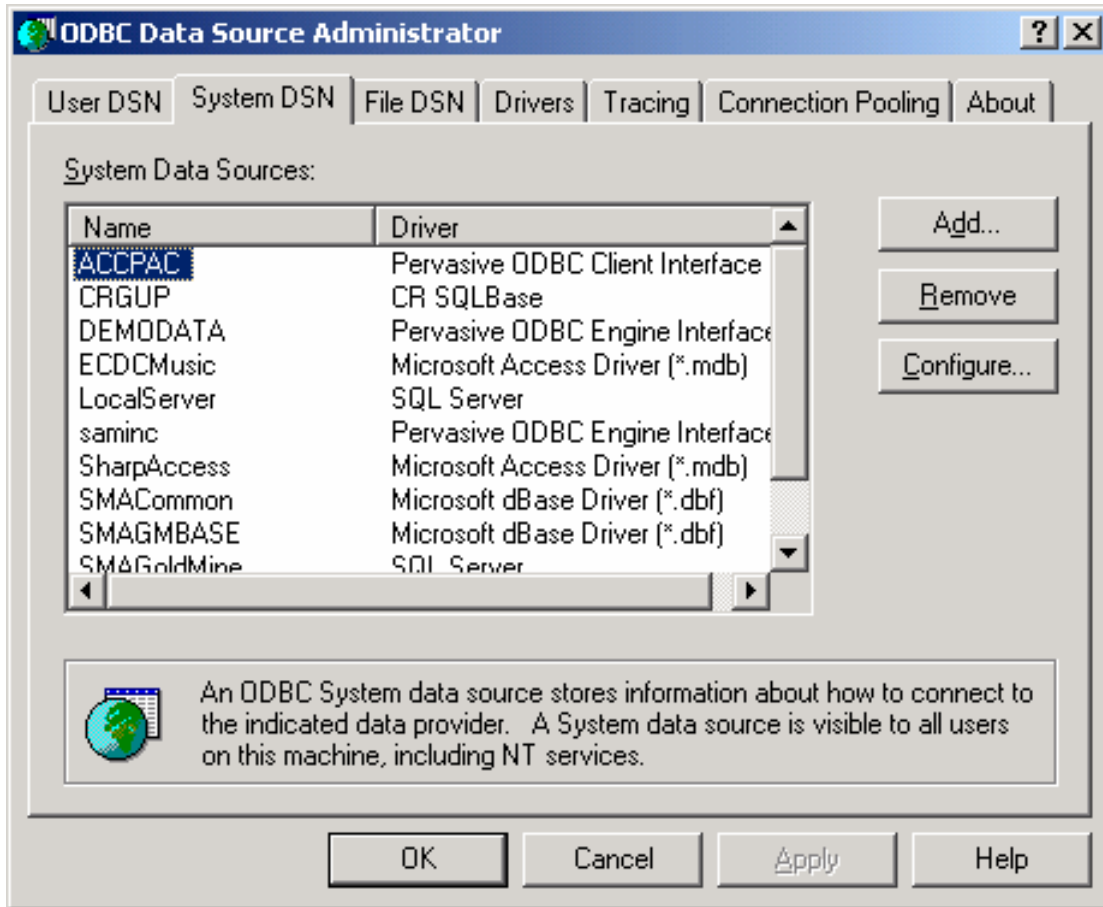
You will see a different form for the client side. Create an appropriate DSN. When it asks for the **Address** you can use either the **IP address** or the **Computer Name** pointing to where the Pervasive.SQL 2000 server is located.



-- OR --



Then click on the **Get DSN List** button, which will pull up the Pervasive.SQL 2000 DSN names that are on the server. If you do not see the list then the client hasn't the proper access to the server. This is an area that IT folks must correct or decide how to handle depending on company policy.



At that time, you will have created a System DSN on the Client machine that can then be accessed by programs such as Crystal Reports, Excel, Access, or any other ODBC compliant software that you may wish to access the Pervasive (in our case - ACCPAC) data from.

